

# AUTOMATED CLINICAL CHEMISTRY RANDOM ACCESS ANALYSER

Make **VENUS** system your next move in clinical chemistry analysis

**VENUS**

Innovative technology and friendly use meeting all your requirements: simplicity, reliability, accuracy, competition.

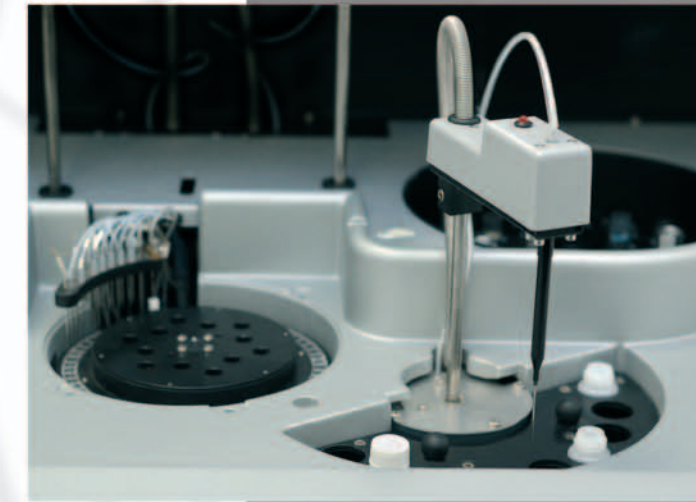


**VENUS**

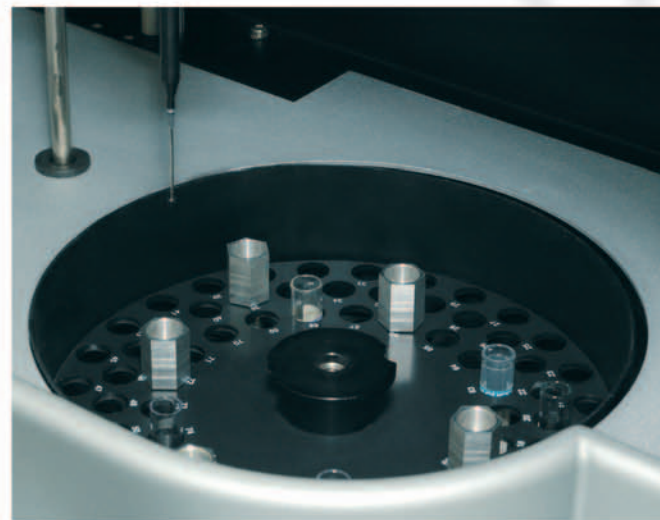
## SYSTEM OVERVIEW



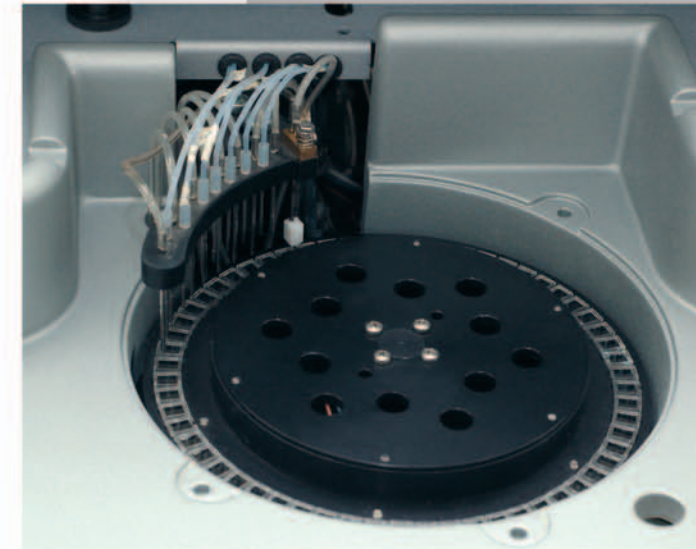
Capacitive liquid detection system  
Automatic internal and external needle washing by dedicated wash station for each arm  
Reagent 1 and Reagent 2 probe heater



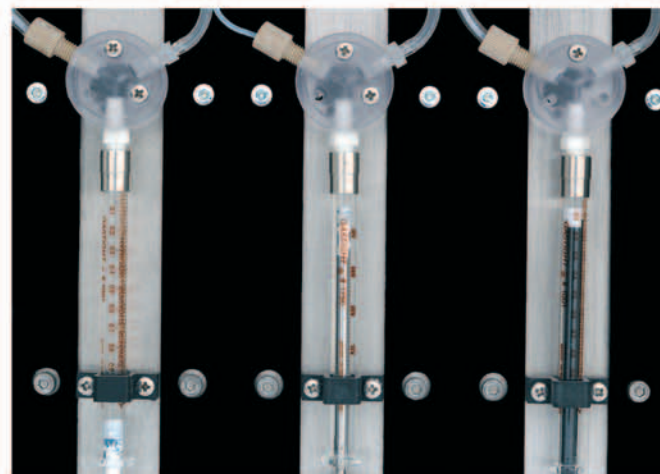
The common shape of reaction wells and cups could be easily found in the local market



The solid state cooling system for Reagent 1 and 2 trays could be in stand-by with a independent switch



Venus analyser is equipped with a 10 step washing station that extends for 11 cuvettes.

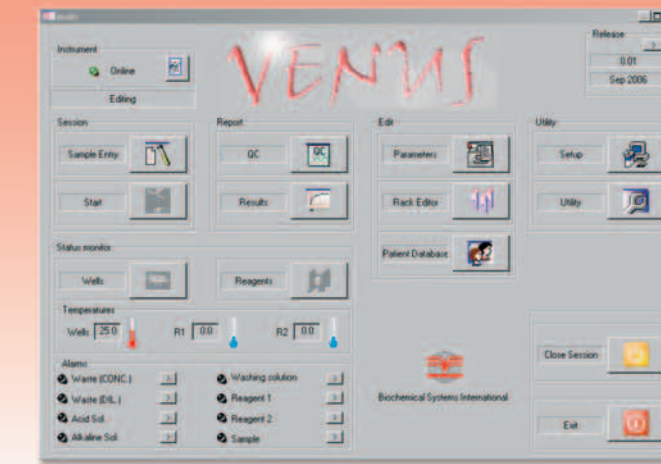


Dedicated diluter for each arm.  
1000ul syringe for reagent arms and 500ul syringe for sample arm

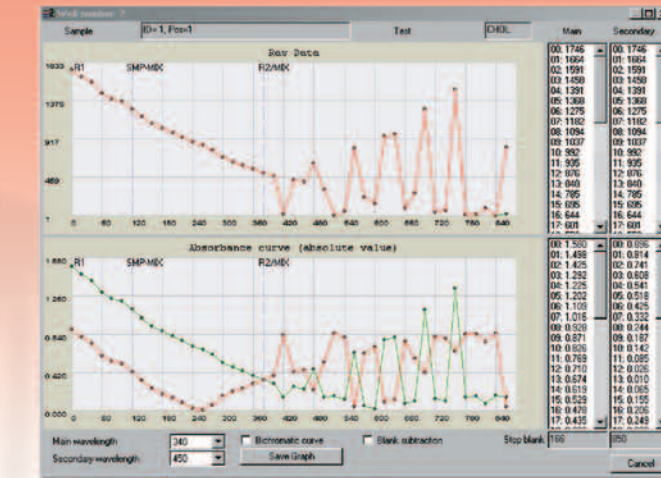
**VENUS**

**VENUS**

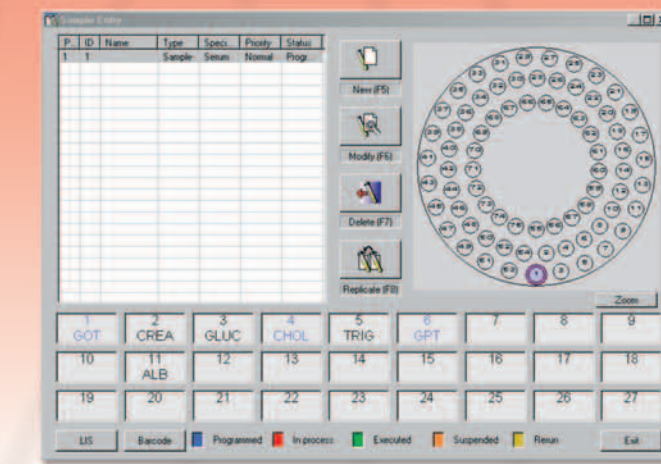
## SOFTWARE



MAIN MENU



WELL NUMBERS



SAMPLE ENTRY

**VENUS**

**VENUS**

Discover the simplicity of operating with Windows® environment. Skilled laboratory staff will be able to run **VENUS** within short time. System maintenance instructions are integrated in the software.

- Walk away capability
- Continuous sample loading
- 5 levels of priority for samples (stat, pediatric, suspended, rerun, routine)
- Real time abs. graph at all the wavelength for all the methods
- Easy selection menu by icons
- The reagent position is edited by user
- Runtime alarms about alert on reagent volume
- User friendly test request for samples
- Available post processing for results
- Open systems: easy and complete test editing
- 9 profiles of up to simplify your task of profile management
- continuous working status monitor
- automatic flagging of results depending of parameters setting
- QC programs (Levey-Jennings and Westgard rules)
- Intelligent error management: resuming from error available
- Multilanguage support
- Local area network integration facilities
- Hardware autodiagnosis